

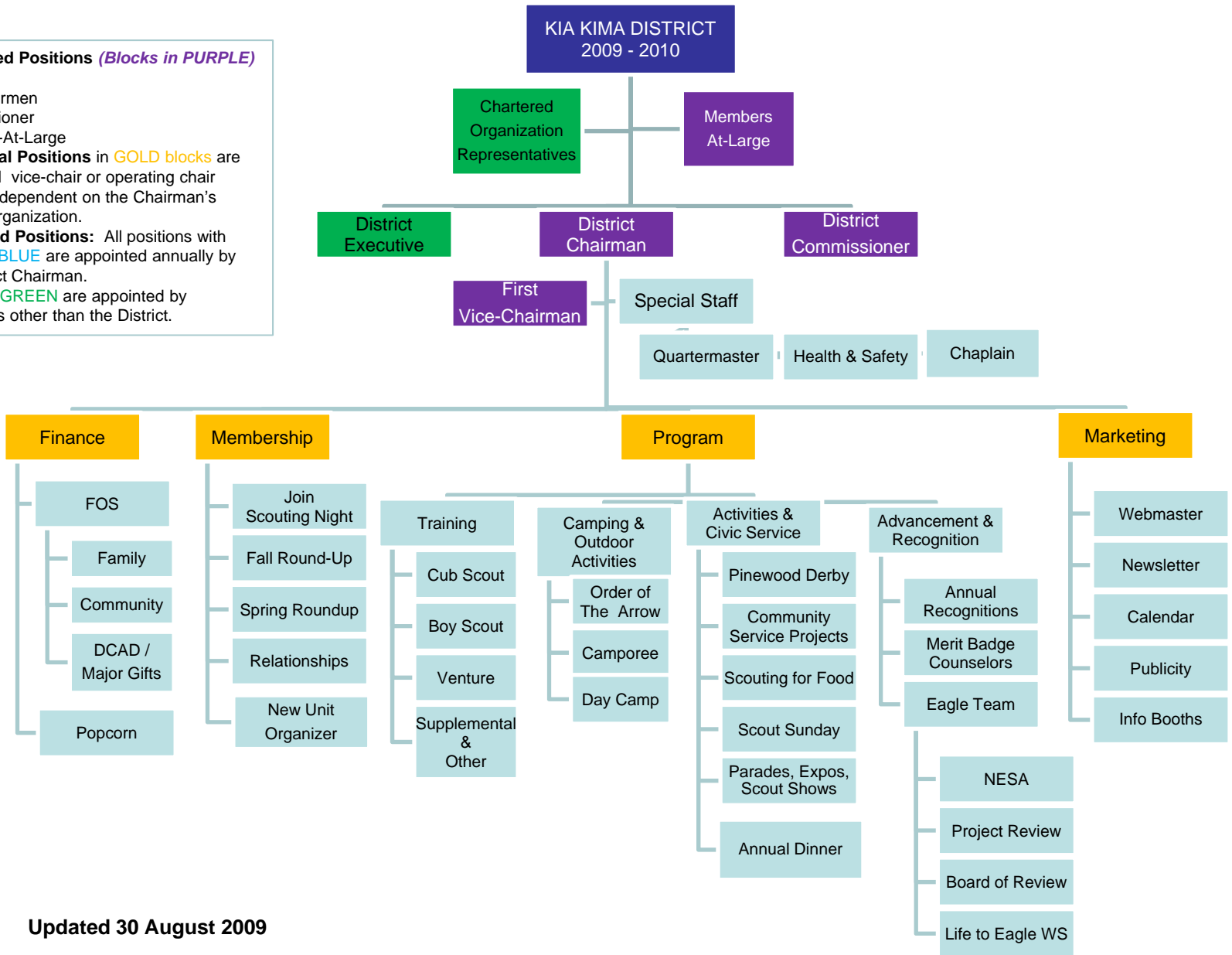
Nominated Positions (Blocks in PURPLE)

Chairman
 Vice-Chairmen
 Commissioner
 Members-At-Large

Functional Positions in GOLD blocks are appointed vice-chair or operating chair positions dependent on the Chairman's desired organization.

Appointed Positions: All positions with blocks in BLUE are appointed annually by the District Chairman.

Blocks in GREEN are appointed by authorities other than the District.



Updated 30 August 2009